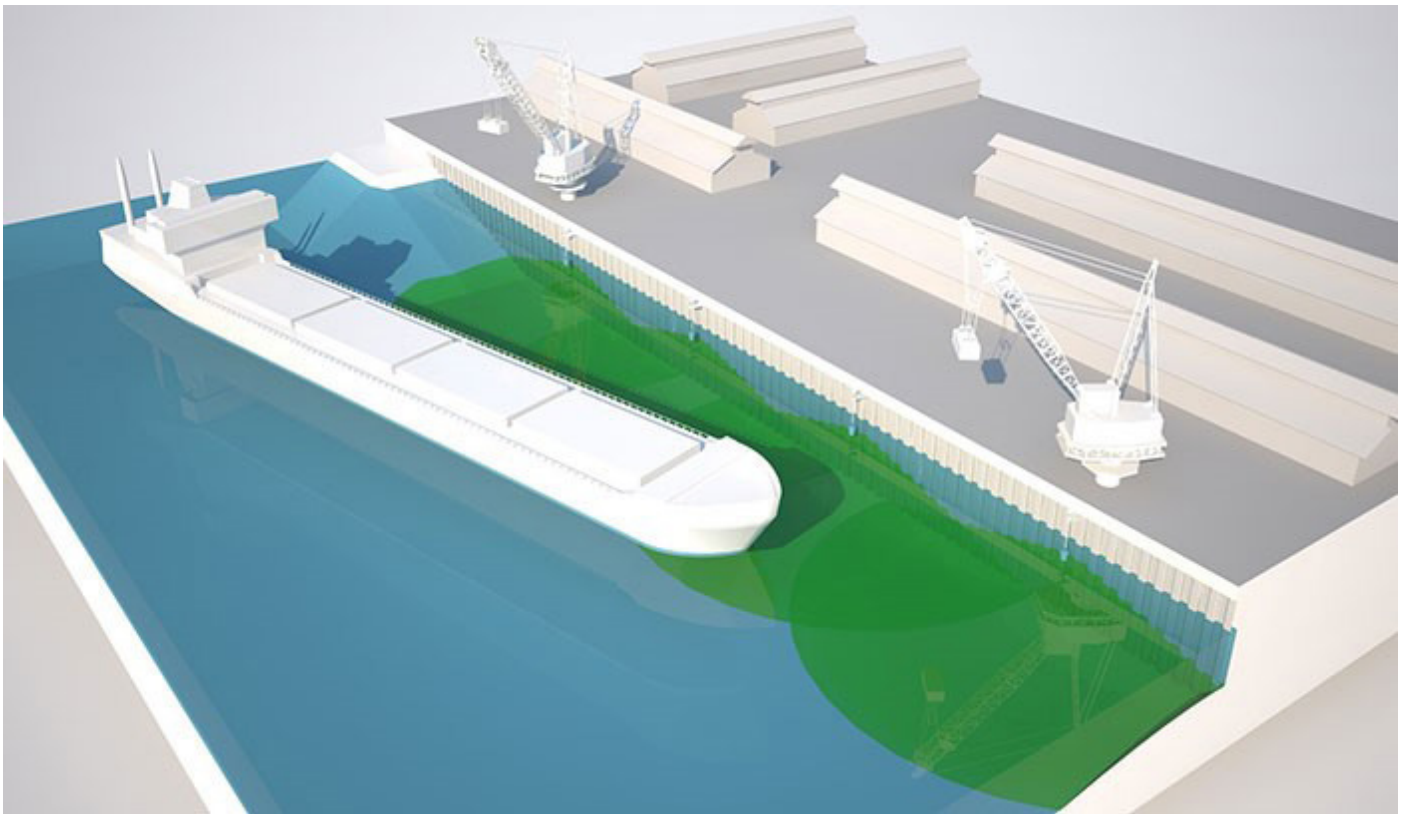




KONGSBERG

BERTHWATCH™

BERTH DEPTH MONITORING AND REPORTING SYSTEM



BerthWatch™, Kongsberg Mesotech's berth depth monitoring and reporting system, allows ports and terminal operators to get real-time berth depth soundings, corrected for tide and weather, at any time, from anywhere.

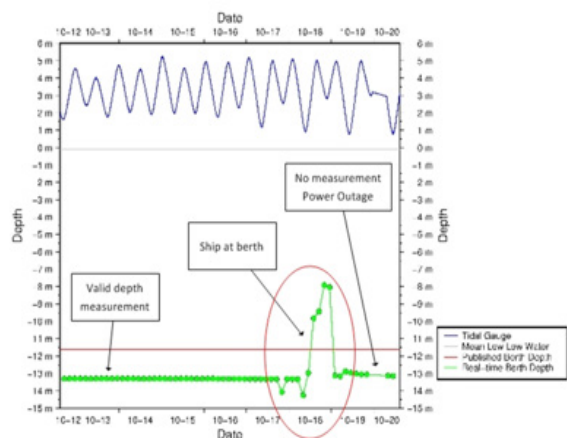
A BerthWatch system comprises one or more DAS sonar heads, Sensor Interface Units, Data Processing Units, and remote access protocols that allow multiple users to access the data from numerous platforms including cell phones, tablets, laptop and desktop computers.

Features & Advantages

- Rich data on dynamic changes to berth bottoms
- Simple architecture
- Scalability
- Accessibility
- Maintainability
- Security
- Production of evidentiary data
- Integration with other navigation systems

Depth plot

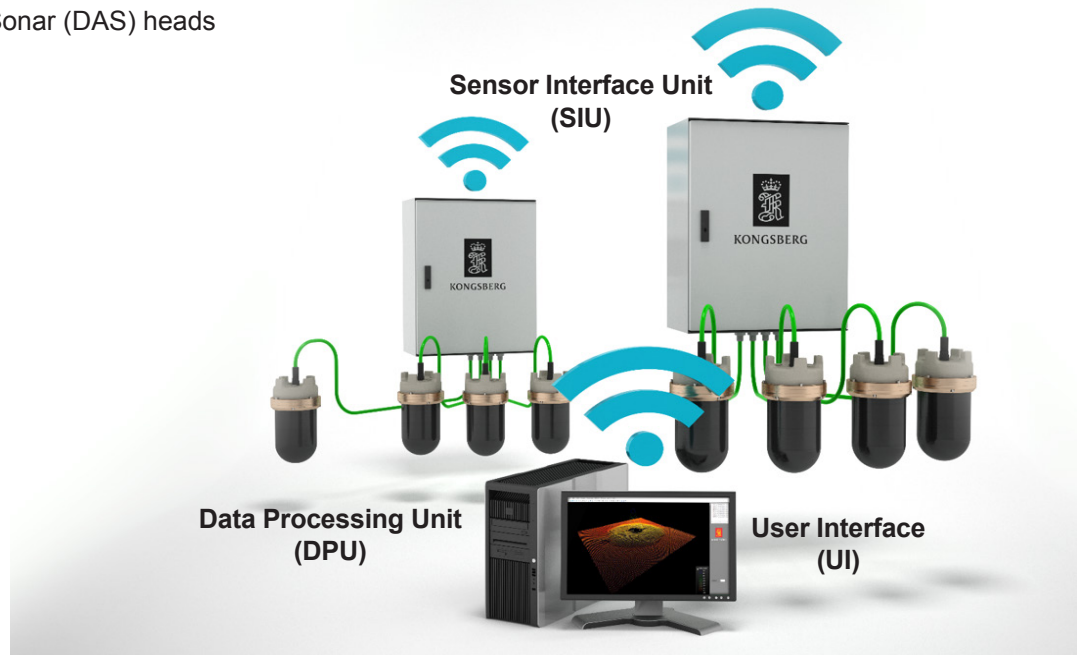
Interval (hours): 6 12 24 48 96 192



For a white paper with more information on BerthWatch, please contact your local Kongsberg Maritime sales office or email km.sales.vancouver@km.kongsberg.com.

BERTHWATCH SYSTEM COMPONENTS

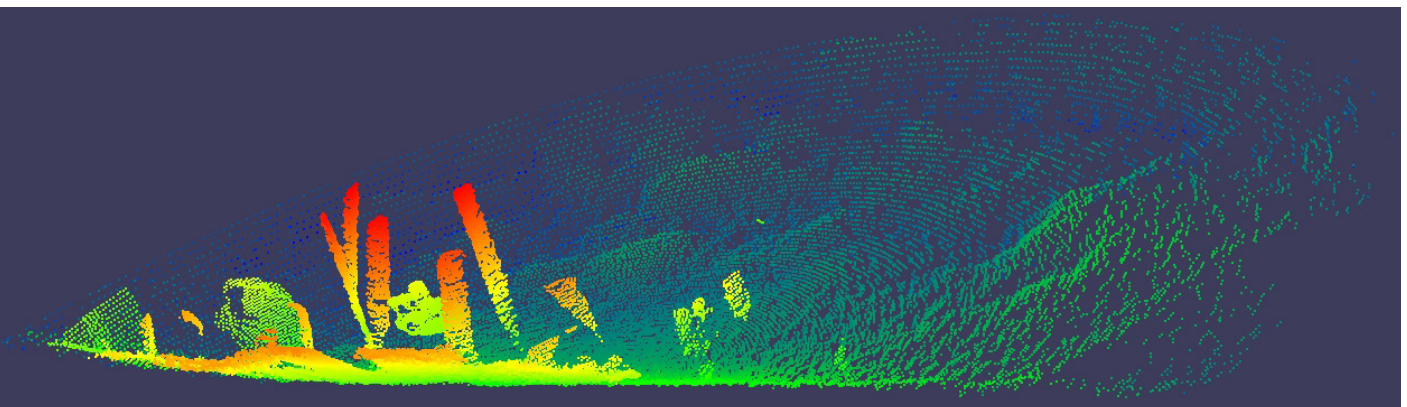
- One or more Dual-Axis Sonar (DAS) heads
- Sensor interface units
- Data processing units
- User interfaces



BERTHWATCH INSTALLATION IN VANCOUVER, CANADA



Location of DAS Sonar. Note the angle of the pilings as they enter the water.



Point cloud - side view.

www.kongsbergmesotech.com

E-mail: km.sales.vancouver@kongsberg.com
Telephone: +1 604 464 8144
Toll-free: +1 888 464 1598



KONGSBERG