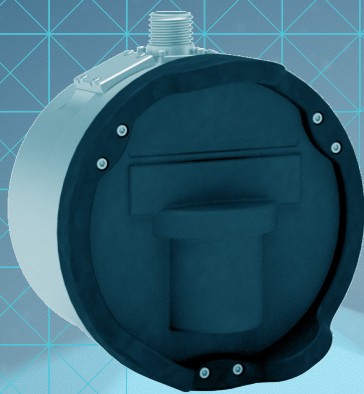




KONGSBERG

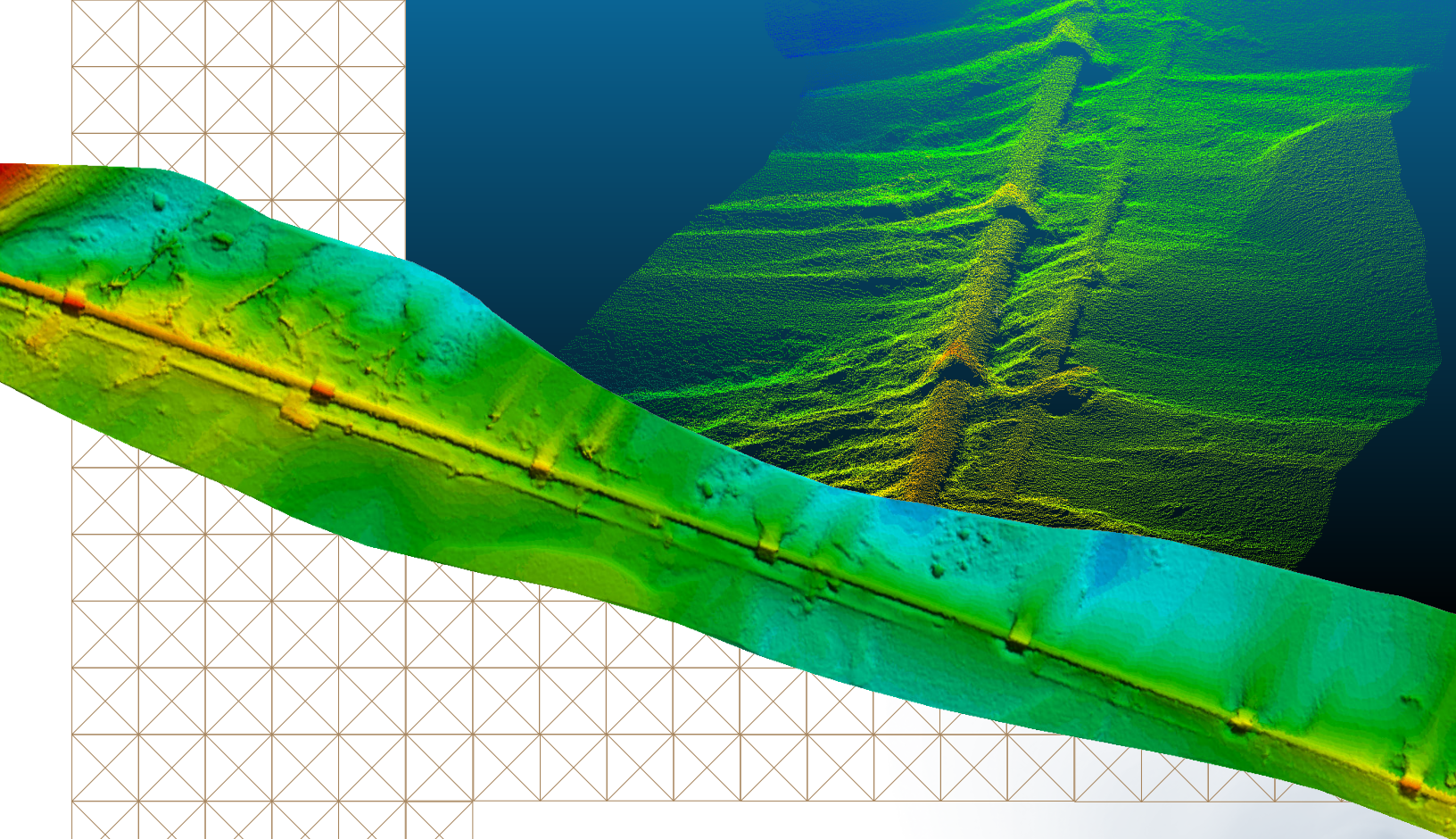
M3 SONAR HF

High-frequency multibeam sonar
with both imaging and profiling modes

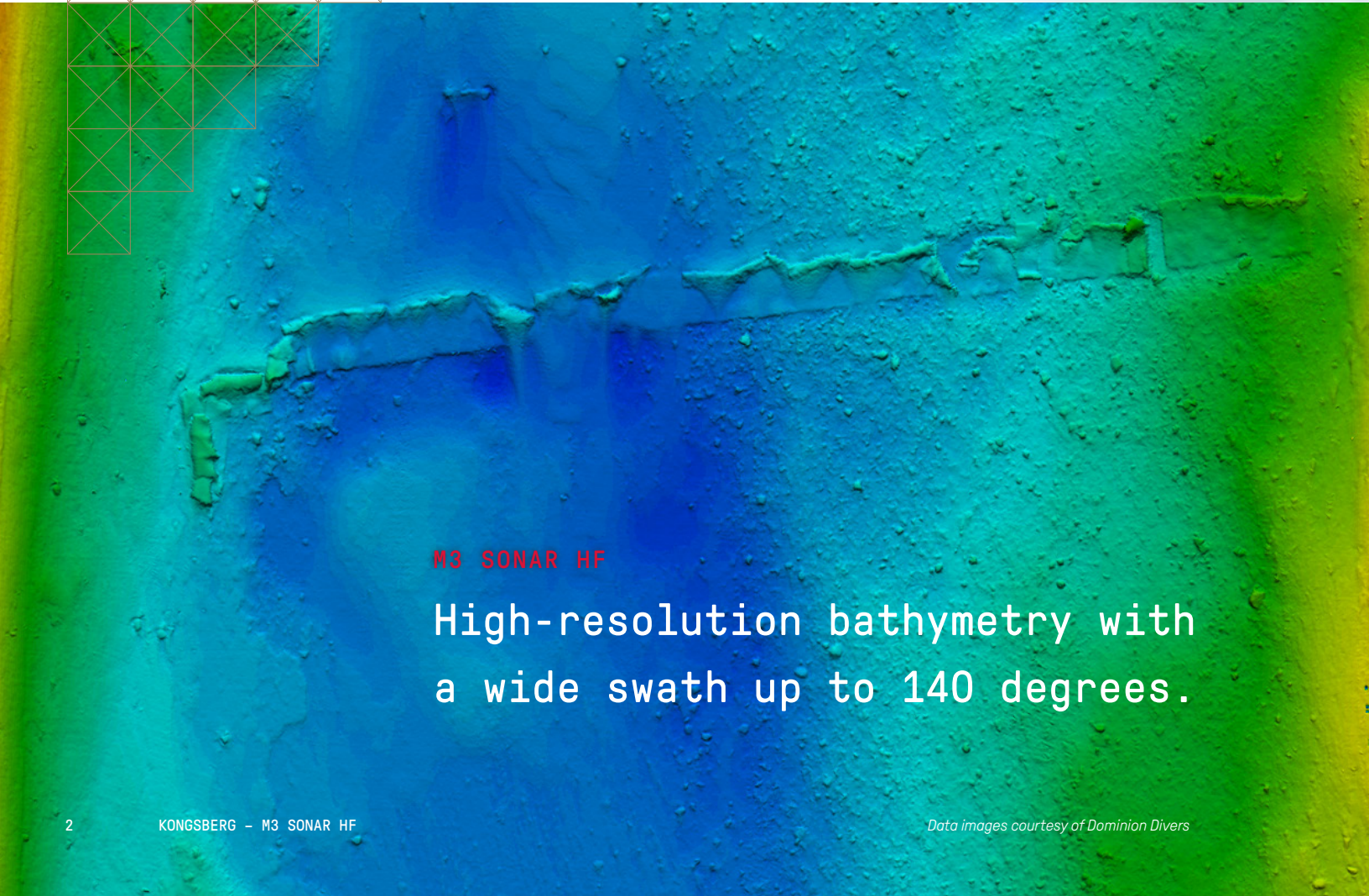


APPLICATIONS

- Pipeline survey and inspection
- Gas-leak detection and seep monitoring
- Fish behaviour monitoring
- Fish habitat mapping
- Infrastructure inspection
- Dredge monitoring
- Cable laying and trenching



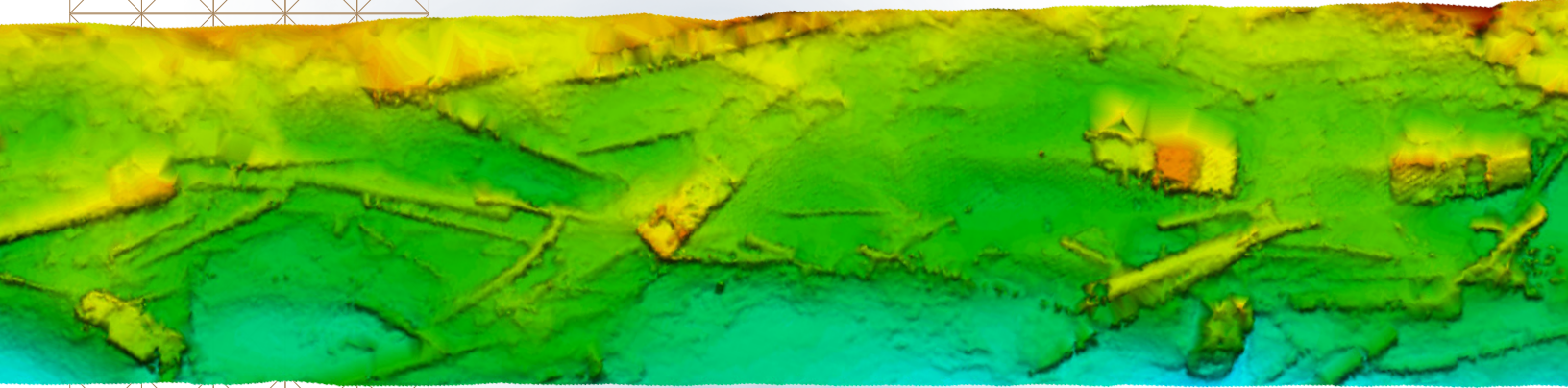
Pipeline survey and inspection



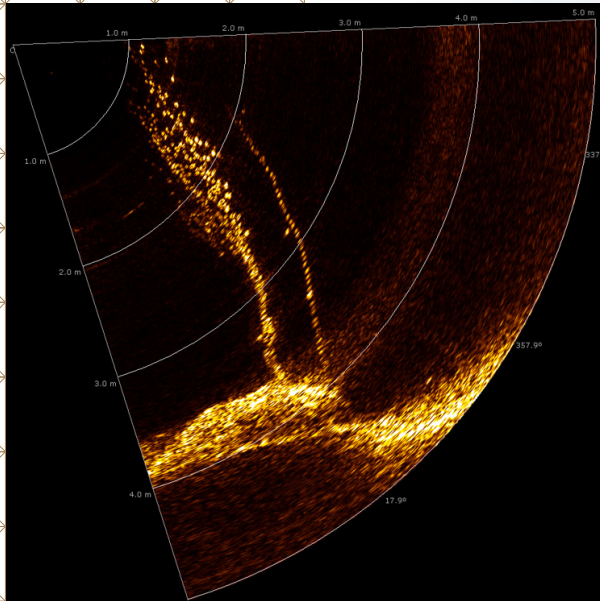
M3 SONAR HF

High-resolution bathymetry with
a wide swath up to 140 degrees.

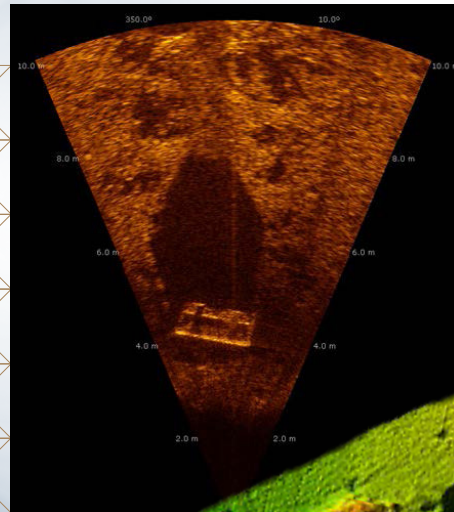
Abandoned cars in river



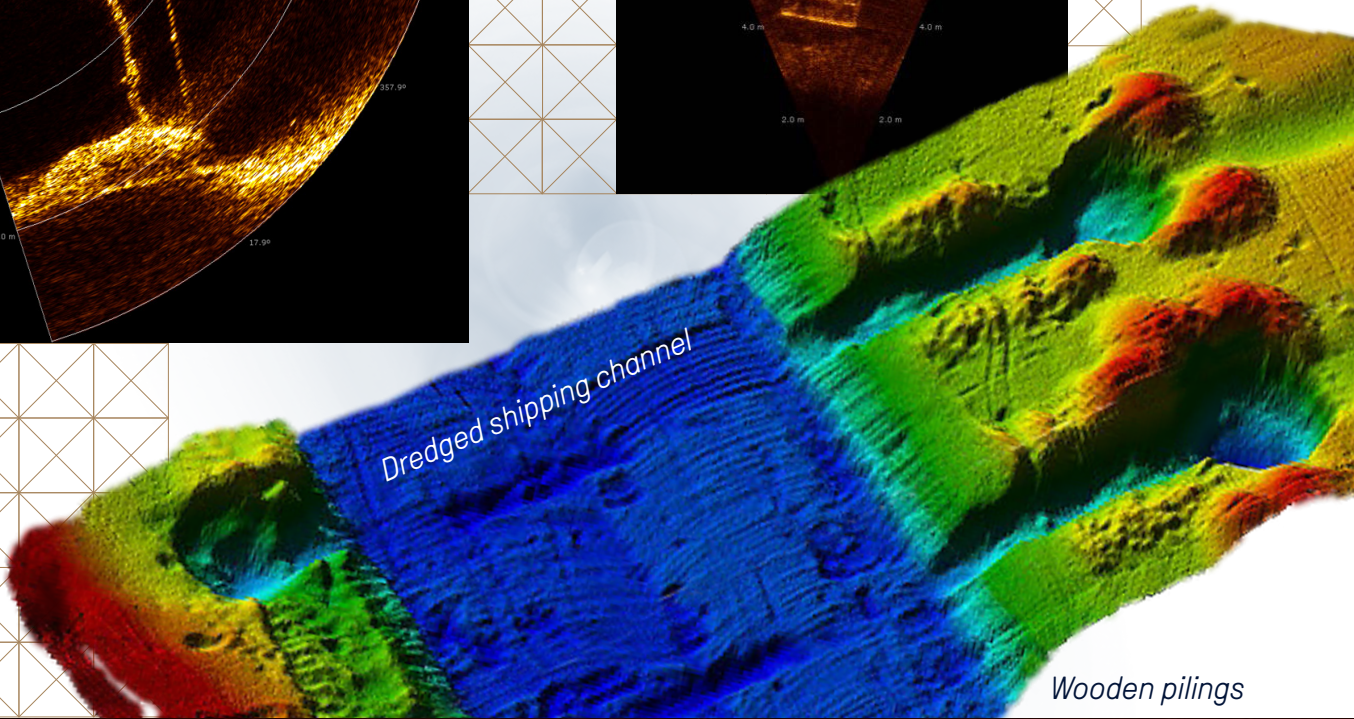
Gas leak



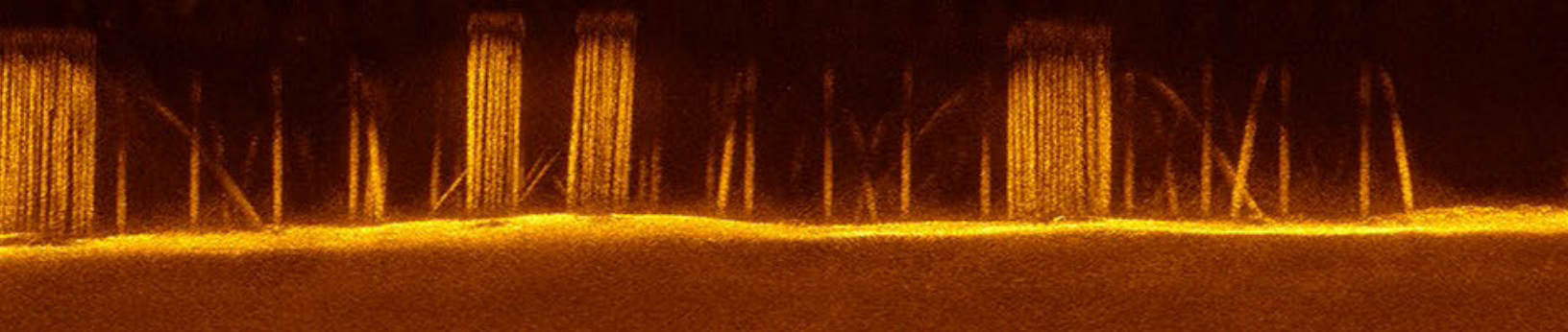
Concrete block



Dredged shipping channel



Wooden pilings





KONGSBERG



SONAR SPECIFICATIONS

Depth Rating:	4000 m
Range:	0.2 m to 100 m
Range resolution:	1 cm
Frequency:	700 kHz - 1400 kHz
Pulse types:	CW, CHIRP
Update rate:	up to 40 Hz
Max. beams:	512
Communication:	Ethernet
Data rates:	10/100 Mbps
Synchronization:	PRI Sync, 1PPS
Connector Type:	SEA CON®
Connector Model:	MINK-10-FCRL
Materials:	Elastomeric Polyurethane and all-titanium construction for cost-effective long-term deployment.

KONGSBERG MESOTECH

1598 Kebet Way, Port Coquitlam, BC, Canada, V3C 5M5
Phone: 604-464-8144
Toll-Free: 1-888-464-1598

kongsbergmesotech.com
km.sales.vancouver@km.kongsberg.com